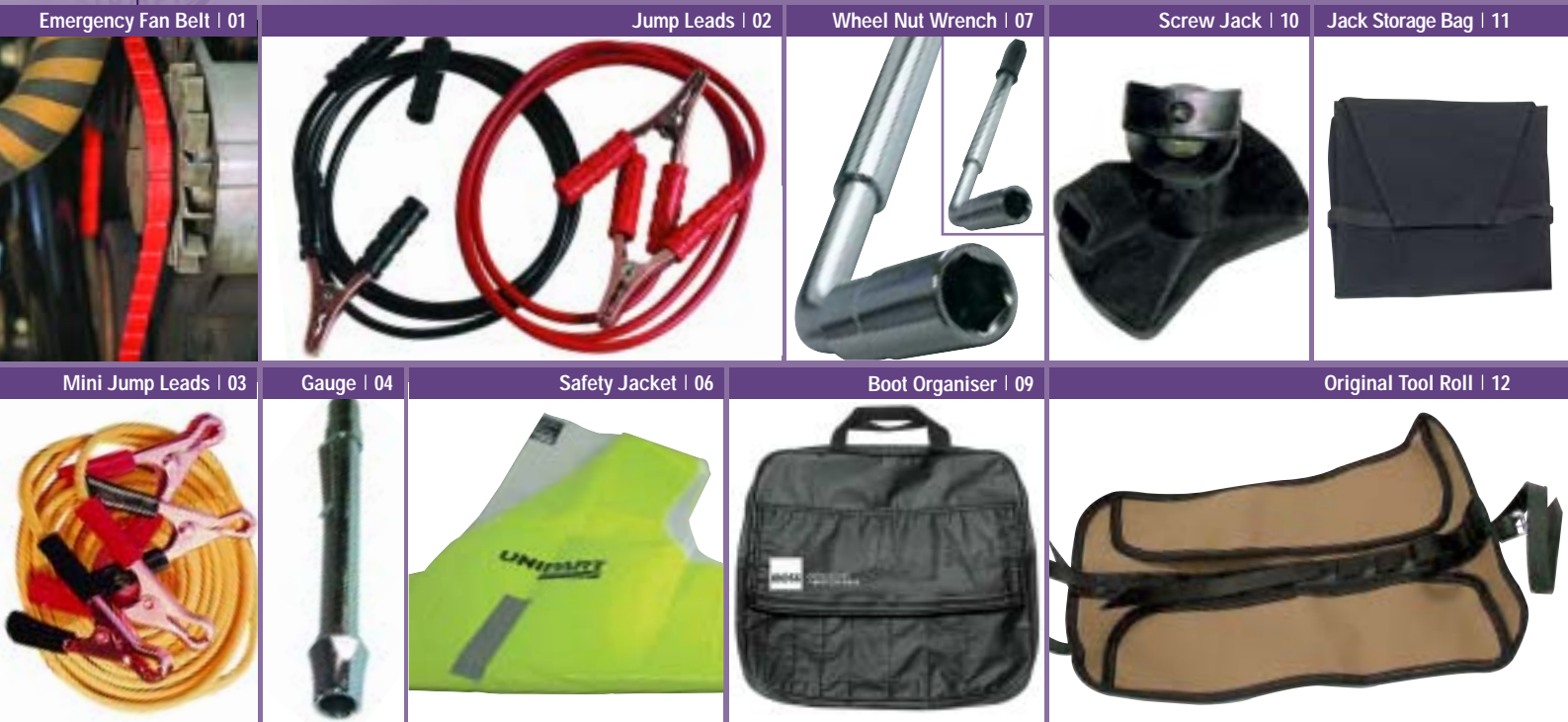


62 Workshop Tools & FLUIDS



Emergency Tools & Accessories For Touring

Emergency Fan Belt.

Easily adjusted to any length, this belt really can get you out of trouble. Just thread the open belt over the pulleys, remove the extra links and snap the ends together, and you are back on the road.

(01) Emergency Fan Belt GAC9979X

Battery Jump Leads.

Keep a set in the boot, you never know!

These 8ft long high quality leads are manufactured from heavy duty copper core cable, with copper plated steel crocodile clips and rubber grips.

(02) Jump Leads DMR22413

Mini Jump Leads.

Keep a set in the glovebox! These ten foot long leads are more than adequate for occasional or emergency use. Supplied with nylon carry case.

(03) Mini Jump Leads 900-060

Tyre Pressure Gauge.

Properly inflated tyres help road safety - and fuel economy.

(04) Tyre Pressure Gauge (Bar & PSI) GAC8049X

Warning Triangle.

If you are unfortunate to have a puncture or breakdown, the first concern must be safety and, to warn oncoming traffic. Mandatory in mainland Europe.

(05) Warning Triangle GAC4136X

Reflective Safety Jacket.

Let them know you are there!

(06) Safety Jacket GAC2999

Wheel Nut Wrench.

Extendable wheel nut wrench with a detachable socket end, enabling any size to be fitted, supplied with 19mm and 21mm sockets. Extends up to 21" long.

(07) Wheel Nut Wrench DMR19152

Emergency Tools cont...

General Tool Bag.

Ideal for keeping your bits and pieces in.

(08) Tool Bag AHA5506

Boot Tool Organiser.

No more loose items in the boot. Made from heavy duty vinyl with a velcro covered spanner section and a zip pouch.

(09) Tool Organiser GAC9974X

Jacks

05 |



Our vintage type screw jacks are identical to the original and, are an ideal piece of period equipment for your T Type and MGA, Healey etc... They are also ideal for keeping the garage door open!

Our jack storage bag carefully tailored with the original type vinyl covered burlap is an accurate reproduction of the originals as supplied with all MGA's. The very handy envelope tool bag matches our jack storage bag. Whilst our tool roll straps will secure it to the rear bulkhead.

Our tool roll, originally for TC/TF models, is a terrific reproduction of the original. Constructed from heavy duty original type tan canvas, it will keep your tools where they should be. Safety Note; Once the car has been jacked-up, it is advisable to support the vehicle properly before you start working beneath it.

- (10) Vintage Screw Jack AHH5124K
- (11) Screw Jack Storage Bag AAA3447
- (12) Original Tool Roll For TC, TD & TF 385-910
- (13) Period Style Tool Roll ACG5247
- Tool Roll Strap (2 Reqd) AAA4528
- (14) Tyre Lever Set (Pair) AJJ281K
- (15) Scissor Jack & Handle General Use 212677Z

08



Workshop Tools & FLUIDS | 63



Engine Analysis

Battery Care

Even if you don't need to work on your own car, these tools make ideal presents.

Gunsons Exhaust Gas Analyser.

Go on, do your bit for the environment. Checks your cars exhaust for emissions. This unit could save you an aborted trip to the MOT station.

(16) Gunsons Exhaust Gas Analyser MRD1207

Gunson Colortune 500.

Colortune is basically a glass topped spark plug that allows you to see the colour of combustion in the cylinders, taking the guesswork out of the mixture setting/adjustment.

Comes complete with angled viewing system for awkward places, tuning procedures and trouble shooting guide.

(17) Gunsons Colortune 500 MRD1005

Gunson Flash Test.

Gunsons flash test checks the condition of your car's ignition high-tension circuit by measuring the strength of the voltage at the spark plug.

(18) Gunsons Flash Test MM386-875

Digital Analyser.

This digital analyser is an essential piece of equipment to help keep a classic in good order. Packed with features including DC measurement, voltage, current, resistance and dwell angle. Supplied complete with leads, battery and case.

(19) Digital Analyser DMR50024

Spark Tester.

This tester can be safely placed in the HT circuit to establish if a high tension spark is present. Making it by far the safest method of testing the spark strength.

(20) Spark Tester DMR38898

Every battery sometimes needs a little help. See also Performance & Tuning for battery Isolator switches and cables.

Multi XS 3600 Battery Conditioner/Charger.

Automatically recharge used battery cells. Suitable for all vehicle types; cars, motor bikes etc... L.E.D. monitoring display - battery status display. Permanent unsupervised use. No need to disconnect the battery. Polarity warning signal. Charges every 12v battery up to 14.7v maximum. Weight: 500g. 12 Month guarantee. Thermal cut off fuse. Safe on sealed gel batteries. Requires 240v supply.

- Careful rapid charging of all lead-acid batteries.
- Safe to use with sensitive electronics.
- Maintenance charging with pulses.
- Reverse polarity protected.
- Low current and Winter modes.
- Outdoor use.

(21) Battery Charger GBY9998
Connector Kit GAC9983

(This connector kit gives you the choice of using quick connectors rather than using crocodile clips).

PriorityStart.

PriorityStart automatic starting protector monitors battery voltage. If while the car is parked there is a drain from the battery, at a pre-determined level, it automatically disconnects the battery, preserving enough power to start the car. The unit senses the ignition key in the 'On' position, and again automatically, reconnects.

(22) PriorityStart MM459-350

Battery Acid Neutralising Mat.

Made from special acid absorbent material that neutralises acids. Easily cut with scissors to match the shape of any battery or battery tray. Ideal for use when your battery is out of the car to prevent contamination.

(23) Battery Acid Mat GAC2029X

64 Workshop Tools & FLUIDS



Specialist Tools & Equipment

Keep these items in your general tool bag.

Clutch Alignment Tool;

- | | | |
|------|------------------------------------|-----------|
| (01) | TR2-TR6 | MM287-320 |
| (02) | Points Gap Tool & Screwdriver | 500905 |
| (03) | Timing Degree Plate | TT2929 |
| | Durable Dot Hood Fastener Tool Set | GAC5060X |
| (04) | Tenax Hood Fastener Key | GAC5063X |
| (05) | Dzus Fastener T Key | 650161 |

Tools for SU Carburettors.

Here we list a range of tools that make life so much easier when overhauling and re-tuning your SU carburettors.

- | | | |
|------|--------------------------|-----------|
| (06) | Carburettor Synchroniser | MM386-200 |
| (07) | Jet Centring Tool | GAC6101X |
| | Carburettor Needle Chart | ALT9501 |
| (08) | Jet Adjustment Spanner | AUD2693 |
| (09) | Carburettor Reamer | 386-385 |
- (This special reamer is designed to open up worn 5/16" throttle shaft bushings to accept 0.010" oversize throttle shafts).



Click-Adjust Tappet Adjusting Tool.

Adjusting tappets is never a pleasant chore. This tool takes much of the effort out of this necessary job. Requires a 1/2" drive socket to fit tappet adjustment nut.

- | | | |
|------|-------------|---------|
| (10) | Tappet Tool | MRD1299 |
|------|-------------|---------|

General Garage Equipment

Oberg Tilt & Lift Engine Hoist.

Tilting an engine, to clear obstructions such as the bulkhead, when removing can be difficult. This handy device allows the engine to tilt and clear obstacles. Heavy duty construction will hold up to 2000 pounds and can tilt to 90°.

- | | | |
|------|--------------|----------|
| (11) | Engine Hoist | GAC9130X |
|------|--------------|----------|

Rhino Car Ramps.

These light, but heavy duty ramps, manufactured from strong high density plastic, have a gentle 17 degree incline, making them perfect for all cars, especially if you have lowered suspension and/or low profile wheels and tyres.

- | | | |
|------|--------------------|---------|
| (12) | Rhino Ramps (Pair) | 400-800 |
|------|--------------------|---------|

Wheel Chocks.

Manufactured from a very tough high density plastic, with rubber feet for a safe grip. Ideal for preventing your car from rolling when using axle stands or wheel ramps.

- | | | |
|------|---------------------|-----------|
| (13) | Wheel Chocks (Pair) | MM900-150 |
|------|---------------------|-----------|

Fold-Away Axle Stands.

These fold-away axle stands can support 2000kg. Height range is 235mm to 365mm.

- | | | |
|------|--------------------|----------|
| (14) | Axle Stands (Pair) | DMR36524 |
|------|--------------------|----------|

Rolling Floor Jack.

Just slide the jack assembly under a wheel, press down on the pedal until the tyre clears the ground. Heavy duty castors allow easy movement of the car in confined spaces. Ideal when working on the car in your garage if space is limited.

- | | | |
|------|---------------------------|---------|
| (15) | Rolling Floor Jack (Pair) | 900-162 |
|------|---------------------------|---------|

Wheel Dolly Set.

These non-height adjustable units are just the thing to help you move your car about easily in confined spaces, simply roll your car onto the dolly.

- | | | |
|------|-----------------|---------|
| (16) | Wheel Dolly Set | 900-161 |
|------|-----------------|---------|

Workshop Tools & FLUIDS | 65



General Garage Equipment cont...

Mechanics Wing Covers.

Our high quality wing covers, with logo, are padded with foam rubber backing to protect your paintwork from those little accidents.

(17) With Triumph Logos (Pair) GAC9975X

Park Smart Parking Mat.

No more guessing when putting you car in the garage. The flat tongue uses the cars weight to keep the mat from moving.

(18) Park Smart Mat (Each) 200-600

Workshop Apron With TR Logo.

With logos, these are ideal for those quick, messy jobs, having adjustable straps and three large pockets.

(19) Workshop Apron GAC9938X

Disposable Mechanics Gloves.

Bio-degradable natural latex gloves are ideal for any messy job. These gloves provide natural grip and feel, and, fit either right or left hand. 100 gloves per box.

(20) Disposable Latex Gloves 228-690

Magnetic Tray.

Ideal for placing and keeping safe small items such as; nuts, screws, washers etc... This 145mm diameter tray is made from shatter proof plastic and, with its strong rubber coated magnetic base, it holds securely to body panels.

(21) Magnetic Tray DMR35384

Lever Action Grease Gun.

Easy to use lever operated grease gun delivers a pressure of over 4000psi and has a cubic capacity of 130cc.

(22) Lever Action Grease Gun DMR12681

Classic Pump Action Grease Gun.

An alternative to the modern lever action grease gun, especially if you want to keep that true classic feel.

(23) Pump Action Grease Gun BHA4576

General Garage Equipment cont...

Tool Caddy.

This must be the handiest item in any garage. The tool caddy is a flat trolley with lipped edges, that keeps your tools within arms reach.

(24) Tool Caddy MM384-895

Compression Tester.

A compression test is the most accurate way to gauge and check the condition of the engine. This tester features a 300mm flexible hose with threaded adaptors to suit 14mm spark plugs and a pressure release valve.

(25) Compression Tester DMR37442

Oil Spill Mat.

Keep working area surfaces clean when carrying out oil changes, when working under the car, or just as a precaution

(26) Oil Spill Mat GAC2028X



66 Workshop Tools & FLUIDS

Brake Fluids

When Did You Last Change Your Brake Fluid?

If you have never replaced your brake fluid, we strongly recommend you inspect all seals and hoses and replace as necessary.

Unipart Brake/Clutch Fluid.

Most modern day cars use DOT 4 clutch and brake hydraulic fluid - which is the minimum specification.

Unipart DOT4 Brake/Clutch Fluid;

500ml	GBF4102
(01) 1 litre	GBF4103
5 litre	GBF4104

DOT5 ABF Silicone Brake/Clutch Fluid.

This high performance fluid is non-hygroscopic, so it doesn't promote rust problems in the hydraulic system and won't damage your paint work. When silicone is in use it will provide years of trouble free braking.

Silicone Brake/Clutch Fluid;

(02) 500ml	ABF3
1 Litre	ABF4

DOT5 ABF Racing Brake/Clutch Fluid.

This racing fluid really is the ultimate in brake fluid. Its anti-boil properties mean that even when the brakes get hot the fluid will remain efficient, rather than boiling locally into useless vapour - such as in the calipers. Due to its high hygroscopic nature, racing fluid should be replaced annually otherwise the integrity and effectiveness will be drastically reduced.

Racing Brake/Clutch Fluid;

500ml	GBF5102
1 litre	GBF5103

Brake System Tools

When bleeding the brakes on any car it is very important to have the correct tools. We supply some very useful items as an alternative to a piece of rubber hose and a pair of pliers.

Eezibleed Kit.

Eezibleed is an excellent way to take away the fuss and mess from bleeding hydraulic systems. Fed by air pressure from the spare wheel, it provides 1/4 lb of pressure to the fluid container.

(03) Eezibleed Kit	MRD1001
--------------------	---------

Visibleed One Man Bleed Tool.

This one man bleed tool is a must. Using a one way valve, the fluid is allowed through the valve but the air is prevented from returning back into the system.

(04) Visibleed One Man Bleed Tool	GAC9378X
-----------------------------------	----------

Mityvac Hydraulic Systems Tool.

This popular, and proven system, is perfect for bleeding hydraulic systems. Our kit includes: vacuum/pressure pump, vacuum gauge, 1/4" tubing, automotive and brake bleeding adaptor packages, reservoir jar and manual. Detailed instructions include ideas for additional uses.

Mityvac Kit	386-215
-------------	---------

Brake Hose Clamp.

The brake hose clamp is chrome plated and has a knurled securing nut. Note; these clamps should not be used on stainless steel braided hoses.

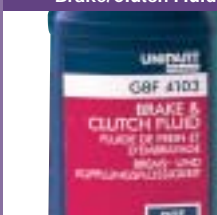
(05) Brake Hose Clamp	GAC8050X
-----------------------	----------

Brake Cleaner.

Keep your braking system up to scratch with this special cleaner.

Brake Cleaner Aerosol 400ml	MRD1090
-----------------------------	---------

Brake/Clutch Fluid | 01



Eezibleed Kit | 03



Bleed Tool | 04



Silicone Brake Fluid | 02



Hose Clamp | 05



Cooling System

Preserve And Maintain Your Cooling System.

Water is a most efficient liquid for cooling engines, but it has two distinctive drawbacks. Firstly it freezes in winter, and secondly it does nothing to stop corrosion. Classic cars can feature large amounts of aluminium, copper, brass and bronze, so it is imperative that a corrosion inhibitor be used to protect the engine's cooling system. **There are four types of corrosion;**

- DEPOSITS;** Calcium carbonates that form hard deposits and adhere to radiator tubes etc...
- OXIDATION;** The combining of oxygen and iron to form rust.
- ELECTROLYSIS;** A chemical reaction between dissimilar metals which react with one another via water thus conducting electricity and deposits on the negative (cathode to anode) area.
- EROSION;** A mechanical problem caused by water turbulence and flow.

Redline Water Wetter.

Another magic potion from the U.S.A., this additive for the cooling system improves efficiency in three ways.

- Firstly.** It improves the specific heat capacity of water, the amount of energy required to raise temperature, meaning the water in the system takes more heat away from the metal parts of the engine. When the water reaches the radiator it is able to transfer more heat energy to the metal radiator core and then to the cooler air flowing through it.
- Secondly.** It reduces the surface tension of water allowing it to flow more freely through the system and make better contact with the metal parts, i.e: engine and radiator.
- Finally.** It has a lubricant quality which prolongs the life of the water pump main seal.

(06) Redline Water Wetter	MM220-115
---------------------------	-----------

Anti-Freeze And Summer Coolant.

It's not just during the winter that you need protection for your engine and radiator. The inclusion of a glycol based anti freeze not only stops the water from freezing during the winter, it also acts as an extra coolant during the summer by removing heat more efficiently from the block and dispersing it even in the worst traffic jam. It also helps to protect from corrosion.

(07) Unipart Anti-Freeze 1 litre	GEC2001
Unipart Anti-Freeze 2 litre	GEC1002
Unipart Anti-Freeze 5 litre	GEC2005

Sealers And Inhibitors.

Here we have listed items that we all know about, but sometimes forget!

(08) Penrite Corrosion Inhibitor	GGL9041X
(09) Bars Seal Pellet	GAC6073
(10) Bars Leak 135ml	MRD1031
(11) Bars Flush 100gm	MRD1032

Workshop Tools & FLUIDS | 67



General Consumables

A selection of very useful garage consumables that should be on the shelf and in the car that no enthusiast should be without.

(12)	Carburettor Cleaner Aerosol 400ml	MRD1023
(13)	Brake Cleaner Aerosol 400ml	MRD1090
	WD40 Small 200ml	GAC110
(14)	WD40 Large 400ml	GAC111
	WD40 5 litre Can & Spray Applicator	GAC381
	Exhaust Assembly Paste (Tin)	GAC2054
	Exhaust Assembly Paste (Tube)	GAC6080
	RTV Silicone Instant Gasket	GAC8000
(15)	Wellseal Jointing Compound 100ml	600569A
	Hylomar Jointing Compound 100gm	GGC102
	Graphite Grease Sachet	AKF1457
(16)	Graphogen Engine Assembly Lube	GGL9122X
	Anti-Seize Compound 10oz	153317
	Gasket Sealant Aerosol	387-500
	Gasket Remover Aerosol 400ml	GEM317
(17)	Loctite Stud-Loc 10ml	GAC100
	Loctite Stud-Loc 3ml	GAC100/3
	White Grease Aerosol 400ml	GEM361
	Hammerite Rust Remover 1 litre	MOC1003
	Trim Adhesive Aerosol 500ml	UBS203
	Trim Adhesive 1 litre	UBS110

General Consumables cont...

Rain-X.

When you have treated your windscreen with Rain-X, you can drive in the rain without using your wipers. Will not smear or damage your wipers. Rain-X interior anti-fog treats windows, mirrors - and even goggles.

(18)	Rain-X Exterior 200ml	GAC9995X
(19)	Rain-X Anti-Fog Interior 200ml	GAC9992X

Dashpot Oil For All SU/Zenith Carburettors.

Specifically designed for both SU and Zenith carburettors, this oil will ensure your carb's are working as they should be.

(20)	Dashpot Oil	GGL9035X
------	-------------	----------

Moss Hydraulic Shock Absorber Oil.

Custom blended specifically for all Girling and Armstrong lever arm shock absorbers. Convenient flip-open pouring spout helps to minimise spills. 16 fluid oz.

(21)	Shock Absorber Oil	AAA149M
------	--------------------	---------

Fuel Tank First Aid Cleaner, Etcher And Sealer.

Use these products to either protect and extend the life of your fuel tank, especially useful if you wish to retain the original tank, or use on your new tank prior to fitting.

This industrial cleaner allows you to clean, to professional standards, your original tank. If you are planning to seal it, then you will need to use the etching agent to ensure maximum bond. The sealing (slushing) compound puts a highly protective film on the inside of the tank that will prevent rust - it will even seal minor leaks/seals.

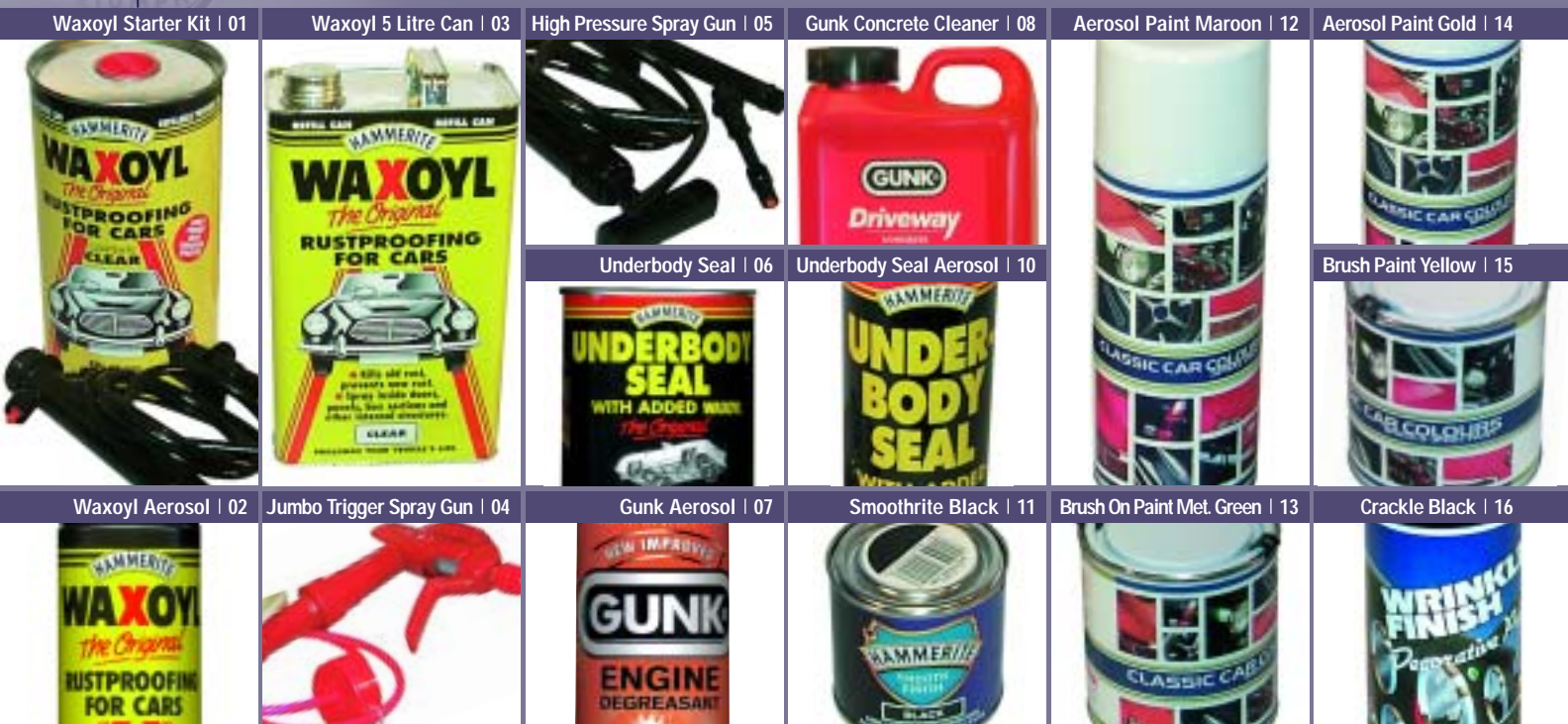
Fuel Tank First Aid;

(22)	Cleaner 1 U.S. Gallon	GAC9858X
	Etching Liquid 16oz	GAC9859X
	Sealer U.S. Quart	608591A



68 Car Care

& PAINTS



Waxoyl

Waxoyl has long been the classic car owners best defence against creeping rust. Once applied, it forms a thick waxy coating that immediately stabilises existing rust and prevents any future corrosion. To protect your car simply apply Waxoyl liberally to the inside and outside of all box sections, chassis rails etc. Our starter kit contains everything you need for initial protection, including a 2.5 litre can of Waxoyl, pump and sprayer.

(01) Waxoyl Starter Kit	WO105
(02) Waxoyl Aerosol 400ml	WO101
(03) 5 litre Can	WO104
2.5 litre Can	WO102
2.5 litre Cartridge	WO103
(04) Jumbo Trigger Spray Gun	WO107
(05) High Pressure Spray Gun	WO108
1 Metre Extension Probe	WO109
Underbody Seal 1 litre	WO113
(06) Underbody Seal 500ml	WO114

Gunk Cleaning Fluid

Gunk, the No.1 degreaser.

Engine Cleaner;

Brush-On 1 litre	MRD1040
(07) Spray-On 400ml Aerosol	MRD1187
(08) Concrete Cleaner 1 litre	MRD1257

Hammerite - Rust Remover

When any hardware and/or mechanical parts are immersed, as instructed, this product will remove and kill rust. Ideal for special nuts/bolts. To ensure long-life, items must be properly degreased prior to being immersed.

(09) 1 litre	MOC1003
5 litre	MOC1002



Hammerite Underbody Seal & Smoothrite

Long proven products, that are easy to apply to those awkward corners. Helps to protect the underbody of your classic and give that quality professional finish.

Hammerite Underbody Seal;

(10) Aerosol Sealer 600ml	MRD1109
---------------------------	---------

Hammerite Underbody Smoothrite;

Aerosol Black 400ml	MRD1216
(11) Can 250ml	MRD1202

Classic Car Colours

Here is a selection of the general paints we stock... For specific car colour paints please contact your nearest branch.

Aerosol paints are supplied in 400ml, the brush-on is 500ml and the touch-in paint is supplied in 125ml tin, with a brush in the lid.

Engine Paint	Aerosol	Brush-On
(12) Maroon	CCEP1	CCEP1BR
(13) Metallic Green	CCEP2	CCEP2BR
Green	CCEP3	CCEP3BR
Engine Black	CCEP4	CCEP4BR
(14) Gold	CCEP6	CCEP6BR
(15) Yellow	CCEP11	CCEP11BR
Bright Red	CCEP10	N/A
Other Paints	Aerosol	Brush-On
Wheel Silver	CCWP1	CCWP1TU*
(16) Crackle Black Paint	MRD1048A	N/A
Super Gloss Black	CCSB1	CCSB1TU*
Satin Black	CCSB2	CCSB2TU*
Matt Black	CCMB1	N/A
Chassis Black	CCCB1	CCCB1BR

(*These paints are supplied in 125ml touch-in tins).



Renovo Hood Care Products

RENOVO We are very pleased to offer this unique and well proven range of hood care products from Renovo. If your hood or tonneau cover is looking a little tired, then these products will clean, re-colour, restore and protect. The soft top reviver is for canvas hood covers, not vinyl.

Renovo Hood Care Range;	
(17) Dry Cleaner Shampoo Aerosol (For fabric hoods).	GAC9020
(18) Soft Top Cleaner 500ml (For vinyl hoods).	GAC9025
Soft Top Reviver;	
(19) Black 500ml	GAC9022
Black 1 litre	GAC9021
Blue 500ml	GAC9022BLU
Blue 1 litre	GAC9021BLU
Brown 500ml	GAC9022BRN
Brown 1 litre	GAC9021BRN
Ultra Proofer For Canvas Hoods;	
500ml	GAC9024
1 litre	GAC9023
Ultra Proofer For Vinyl Hoods;	
500ml	GAC9026
Window Polish For Plastic Windows;	
30ml Bottle	GAC9028
100ml Bottle	GAC9027

Professional Car Duster

This 100% cotton dusting mop is treated with special way to trap dust. Simply shake it out and it's ready for use again. Ideal for show days. 20" long, supplied with carry case.



(20) 231-670 20

AutoGlym



AutoGlym polish and shampoo are renowned for being the best all round car care products for body, bumpers, wheels and interior.

(21) Super Resin Polish	AG001
Car Exterior Shampoo	AG002
Car Interior Shampoo	AG003
Glass Polish	AG004
(22) Chrome & Metal Polish	AG005
Vinyl & Rubber Cream	AG006
Wheel Cleaner	AG007
(23) Leather Care Cream	AG008
Engine Cleaner	AG009
Cutting Polish	AG010
Extra Gloss Polish	AG011
Plastic Restorer & Protector	AG012
Fabric Hood Maintenance Kit	AG013
(24) Black Bumper Renovator	AG014
Silicone Spray 450ml	AG015
Silicone Free Spray 450ml	AG016
Perfect Polishing Cloth	AG017
(25) Hydro Flexi-Blade Screen Cleaner	AG018
Tyre Dressing	HMP190065



| 22

Gliptone Leather Care

Leather will last indefinitely if it is properly cared for, especially if you use Gliptone leather care. In order to keep leather upholstery flexible and in original condition it must be fed with moisturising oils and waxes. Using only natural vegetable ingredients, Gliptone liquid leather has a unique formula which penetrates the leather's brittle fibres providing new youth whilst reinstating that original, wonderful leather aroma. Formulated from Ph neutral ingredients.

(26) Leather Conditioner 250ml	GAC2058X
Neutral Leather Cleaner 250ml	GAC2059X

Novus Plastic Polish

Bottle No.1 cleans and polishes plastics. Bottle No.2 restores the original appearance of plastics. Bottle No.3 removes heavy scratches and abrasions from acrylic surfaces. Final finishing requires Novus No.2.

(27) No.1 Polish 8oz	220-605
No.2 Polish 8oz	220-610
No.3 Polish 8oz	220-615



28

Kozak Dry Wash Cloth

Kozak's specially treated long cotton fibres are woven into a thick plush nap which draws the dust up and away from the paintwork. Kozak keeps your car clean without water.

(28) Kozak Dry Wash Cloth	231-620
---------------------------	---------



70 | Penrite Oils



PENRITE OIL

Penrite offers a complete range of high performance, quality oils and lubricants, specifically formulated for veteran, vintage and classic cars.

Founded in 1926, Penrite has a wealth of experience behind its products. Indeed, the company was lubricating many of today's vintage and classic cars, when they were new!

Modern engine lubricants do not necessarily suit older vehicles, the oils are often too thin and, the additive 'packages' chosen suit today's advanced engineering and materials, not those employed in the design and manufacture of the vehicles of earlier years.

Penrite engine oils are blended from high quality base stocks, combined with selected compatible additives to give the best possible performance, increased engine protection, high oil pressure and, reduced oil consumption. These oils also help reduce 'gumming' and sludge deposits.

The Penrite philosophy of meeting and exceeding original requirements using modern technology extends across a wide range of lubricants - from engine oils for vehicles of all ages, transmission and steering box oils, to specially formulated chassis greases for veterans. Penrite lubricants provide complete mechanical protection and help you care for your vehicle.

Penrite Engine Oils

Running-In Oil.

Penrite running-in oil is designed to promote and control the bedding-in process of newly built engines. It should be used for the first 300 miles and then replaced with the appropriate grade of HPR oil.

- | | | |
|------|---------|----------|
| (01) | 1 litre | GGL9015X |
| | 5 litre | GGL9014X |

HPR 15W/60.

A high viscosity semi-synthetic multigrade engine oil, specifically developed for multi-valve, multi-cam high performance engines requiring a 15W engine oil. This oil offers good all round protection, including good pumpability when cold, excellent viscosity characteristics when hot.

Penrite Engine Oils cont...

It contains the necessary additives to combat wear, and bearing corrosion. HPR 15W/60 meets API SJ/CD requirements and is suitable for turbo and diesel fuelled vehicles.

- | | | |
|------|---------|----------|
| (02) | 1 litre | GGL9083X |
| | 5 litre | GGL9082X |

Classic 20W/50.

Designed specifically for vehicles from the 1960's and '70's, this 20W/50 multi-grade meets the highest API SH/CD standards. Like the original 20W/50's of the 1960's, classic 20W/50 is a full-bodied, hard-wearing oil giving excellent film strength under the heaviest loads.

- | | | |
|------|---------|----------|
| (03) | 5 litre | GGL9044X |
|------|---------|----------|

HPR 20W/60.

Replaces SAE 30 and 20W/50. Formulated for most post-war classics, particularly high performance vehicles such as MG, Porsche, Jaguar and Triumph. Suitable for cars running six volt electric systems, where starter motor cranking speeds require an engine to turn over with minimal drag.

- | | | |
|------|---------|----------|
| | 1 litre | GGL9005X |
| (04) | 5 litre | GGL9004X |

Penrite Gearbox Oils

For use where oils of EP80, EP90 plus 30 and 40 SAE rating were originally recommended. Suitable for older boxes of either straight cut, synchromesh, epicyclic design, or for overdrives (such as Laycock), both oils contains no EP additives which can cause serious damage to gear-boxes containing yellow metals, or friction modifiers which can cause slipping in overdrives and pre-selector gearboxes.

Gearbox Oil 30.

Replaces EP 80, SAE 30 and 20W/50.

- | | | |
|------|---------|----------|
| (05) | 1 litre | GGL9019X |
| | 5 litre | GGL9018X |

Penrite Gearbox Oils cont...

Gearbox Oil 40.

Replaces EP 90 and SAE 40.

1 litre	GGL9021X
5 litre	GGL9020X

Penrite Axle Oils

Hypoid Oils.

The crown wheel and pinion teeth in a hypoid axle slide as well as rotate against each other, which requires the use of extreme pressure additives. Penrite hypoid oils are formulated to meet the specific requirements of older vehicles.

Hypoid 80W/90.

Replacing EP 80, this oil exceeds GL5 specifications, and is suitable for most post-1960 hypoid and spiral bevel gears.

(06) 1 litre	GGL9024X
--------------	----------

Hypoid 85W/140.

Replacing EP 90, this oil is primarily for post-1960 cars requiring a higher viscosity than Hypoid 80W/90, and commercial vehicles. Exceeds GL5 specifications.

(07) 1 litre	GGL9023X
--------------	----------

Limslip 85W/140.

Formulated especially for vehicles where high off-set hypoid gear sets are used in combination with limited slip or spin resistant devices. Ideal for cars fitted with Salisbury and similar limited slip differentials including Jaguar and Aston Martin.

(08) 1 litre	GGL9025X
--------------	----------

Mild EP.

A SAE 140 grade oil suitable for use in bevel, worm and pre-1960 hypoid gears. Rated GL4, this gear oil does not possess the additive package found in later GL5 gear oils.

Note; GL5 oils should not be used in veteran or vintage vehicles as the additive packages in these oils attack metals such as bronze, brass and copper.

(09) 1 litre	GGL9017X
--------------	----------

Penrite General Products

Storage Protection Supplement.

When added to either engine, gearbox and rear axle oils, it protects internals from acidic corrosion and seizure during long storage periods.

(10) 0.5 litre	GGL9043X
----------------	----------

Graphite Grease.

Suitable for general lubrication work, being highly water resistant. Recommended for shackle and spring leaf lubrication.

(11) 500gsm	GGL9030X
-------------	----------

High Melt Bearing Grease.

Calcium complex base grease especially suitable for classic and vintage wheel bearings where exposure to water spray and therefore grease wash-out was a problem.

(12) 500gsm	GGL9040X
-------------	----------

Penrite General Products cont...

Cam Assembly Lube.

For lubricating engine components during assembly - not for use on pistons or in the ring area.

(13) 40gsm	GGL9031X
------------	----------



13

Pouring Jugs.

These handy jugs are designed to fit in with the feel of a classic garage, also making pouring a cleaner process. Available in black and bearing the Penrite logo they are essential garage equipment.

(14) Pouring Jug 1 litre	GAC8066X
Pouring Jug 0.5 litre	GAC8065X

Cooling System Corrosion Inhibitor.

Protects metals in the cooling system from corrosion. Can be used to enhance the anti-corrosion properties of anti-freeze.

(15) 1 litre	GGL9041X
--------------	----------

Shock Absorber Oil.

Use this Penrite oil if you want to tinker with your lever arm shock absorber damping rates. No.1 Light is for most single and double acting dampers including lever arm. Ideal for Jackall systems. No.2 which is ideal for competition purposes, is a heavier grade that increases the damping rate, also suitable for non-piston type dampers.

(16) No.1 Light 500ml	GGL9038X
No.2 Heavy 500ml	GGL9039X

Steering Box Lube.

A self levelling, high viscosity lubricant containing non-corrosive extreme pressure additives. Ideal for veteran and vintage steering boxes. Not for steering racks.

(17) Steering Box Lube 500ml	GGL9028X
------------------------------	----------

Water Pump Grease.

Specially formulated for water pumps that require regular greasing.

Water Pump Grease 100gm	GGL9034X
-------------------------	----------

Carburettor Damper Oil.

Specifically formulated for SU carburettors, both damped and non damped of all ages and, some Strombergs.

(18) Carburettor Damper Oil 125ml	GGL9035X
-----------------------------------	----------

Lead Substitute.

We stock a lead substitute, endorsed by the Federation of Historic Vehicle Clubs, that enables unleaded fuel to be safely used in engines originally designed for leaded fuel.

(19) Superblend 500ml	GAC806
-----------------------	--------

Full Penrite Lubricant Range Stocked

There are many other Penrite oils and lubricants that we stock but have not listed here - such as lubricants for veteran, vintage and/or modern high performance engines/transmissions.

If you require a specific oil/lubricant for your vehicle that we have not shown, please call your local Moss branch who will only be too pleased to help you.



72 | Indoor OUTDOOR



Triumph Marque Lapel Pins

These colourful, attractive enamel and chrome logo pins will look great on hat or jacket.

- | | | |
|------|----------------------------|----------|
| | Triumph Shield Lapel Pin | 229-265 |
| (01) | Triumph Globe Lapel Pin | GAC9948X |
| | TR6 & Union Jack Lapel Pin | GAC9950X |

Factory Dealer & Service Signs

These multi-coloured screen printed signs are a perfect replica of the originals.

- | | | |
|------|--------------------------------------|----------|
| (02) | Triumph Shield Service 12" x 16" | GAC9932X |
| (03) | Triumph Authorised Service 12" x 48" | 214-220 |

And For Those Who Have Other Classics;

- | | | |
|------|--|----------|
| | Austin-MG Authorised Service 12" x 48" | 214-210 |
| (04) | BMC Genuine Parts 18" x 27" | 214-230 |
| (05) | BMC Authorised Dealer 18" x 27" | GAC9929X |
| | Austin Healey Service 6" x 24" | 214-310 |
| | MG Service 12" x 16" | 214-320 |

Triumph Only Parking Sign

Protect your Triumph parking space with an American style metal restriction sign. Height 305mm - width 228mm.

- | | | |
|------|----------------------------------|----------|
| (06) | Parking Sign With Triumph Shield | GAC8030X |
| (07) | Parking Sign With Triumph Laurel | GAC8031X |

Computer Mouse Mat

And why not!

- | | | |
|------|---------------|-----------|
| (08) | TR6 Mouse Mat | HMP122001 |
| (09) | Union Jack | GAC1045X |

50 Years Of Triumph Poster

This striking 25" x 38" colour poster, illustrated by the renowned artist Ken Dallison, highlights Triumphs most popular models from 1925 to 1975.

- | | | |
|------|---------------------|----------|
| (10) | 50 Years Of Triumph | MGL6003X |
|------|---------------------|----------|

Triumph Advertising Poster

We stock an ever changing range of advertising posters created by the marketing departments of MG, BMC, BL, Standard Triumph, etc...

Printed in colour, they are accurate facsimiles of the originals seen in magazine and on billboards around the world. There are so many different types available we are unable to show or even list them all here. Suffice to say that it is worth browsing through the poster collection next time you pop into one of our branches. One of the most popular posters we sell is the American limited edition, reprint of a 1975 US poster promoting the Triumph TR6 and Triumph Spitfire 1500.

- | | | |
|------|----------------------|----------|
| (11) | British Racing Green | MGL6001X |
|------|----------------------|----------|

Commemorative Limited Edition Print

This specially commissioned limited edition print commemorates the 21st Anniversary of the TR Register. The picture is complemented by a pictorial mount depicting some of the more modern competition TR's. Ken Richardson - then head of the Standard Triumph Competitions Department, signed each numbered print together with the artist, Lawrence Bold-de-Haughton. The full colour 24" x 36" print has been produced to the highest standards as specified by the Fine Arts Guild and is strictly limited to 850 prints worldwide.

- | | | |
|------|----------|---------|
| (12) | TR Print | MRD9999 |
|------|----------|---------|

Coffee Mugs

An essential workshop item for all serious classic car owners.

- | | | |
|------|----------|----------|
| | Spitfire | GAC8020X |
| (13) | TR2/3 | GAC8014X |
| | TR4/5 | GAC8015X |



Bar Stool With Logo

Ideal when you're having a well earned respite during those long discussions in the garage whilst having a coffee. 14" easy clean vinyl seats with chrome plated legs 30" high.

- | | | |
|------|-------------------------|---------|
| (14) | Triumph Bar Stool | 231-805 |
| | Austin Healey Bar Stool | 231-810 |
| | MG Bar Stool | 231-800 |



Dart Board | 15

Union Jack Flag | 17

Triumph Fleece | 23

Embroidered Patches | 16

Spruce/Khaki Peak Cap | 20

Beige/Navy Peak Cap | 21

Picnic Blanket | 24

The Triumph Car Company Official Dart Board

The perfect gift for Triumph darts enthusiasts, this 18" board is made to World Dart Federation regulations, and features "Standard Car Company, Coventry, England" across the bottom as well as "Triumph" at the top.

(15) Triumph Dart Board GAC9963X

Embroidered Patches

Add that splash of colour to your jacket, sweater etc... and show your loyalty.

(16) Triumph Rectangular GAC9956X
 British Leyland Rectangular GAC9960X
 Triumph TR Rectangular GAC9955X
 Union Jack 229-510
 BMC Round GAC9961X

Union Jack Flag

Made from light-weight polyester, complete with metal grommets on the hoist.

(17) Union Jack Flag 217-070

Triumph Logo Earrings

Enamelled miniature marque logo earrings.

(18) Triumph Logo Earrings GAC9941X

Embroidered Knit Hat

Perfect for top-down driving when its chilly, these black and red hats, embroidered with the word "Triumph", are serious cold weather gear. Made from heavy-weight acrylic with an anti-pill polar fleece lining that really makes a huge difference.

(19) Knitted Hat - Black/Red 013-409

Embroidered Peak Caps

This quality embroidered, stone washed spruce/khaki hat will keep your hair in place and the sun from your eyes. One size fits all.

(20) Peak Cap Triumph Shield - Spruce/Khaki 219-826

Embroidered Peak Caps cont...

These beige and navy peak caps are embroidered with the choice of a Triumph shield or wreath. The back features the Union Jack and the Moss logo.

(21) Peak Cap Triumph Shield - Beige/Navy 219-828

(22) Peak Cap Triumph Wreath - Beige/Navy 219-846

Triumph Fleeces

Dress the part in a Triumph logo (silver) fleece jacket! These embroidered zip-up fleeces, made from 100% polyester, are available in a choice of five colours and are ideal for those top down driving days.

Size	Navy	Black	Smoke	Forest	Red
Medium	GAC0016	GAC0019	GAC0022	GAC0025	GAC0028
(23) Large	GAC0017	GAC0020	GAC0023	GAC0026	GAC0029
X-Large	GAC0018	GAC0021	GAC0024	GAC0027	GAC0030

Picnic Blanket

Ideal for storing in the boot while out for a Sunday drive, this picnic blanket has a waterproof base, which folds-away neatly and features handy carry-straps.

(24) Picnic Blanket GAC8025X



22 |



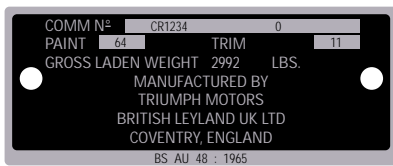
Key To Paint And Trim	
Black (11)	
Matador Red (12)	Signal Red • (32) 1967-71 CCRD32 A/B
Light Tan (13)	Bleeding to right hand edge of this page are the paint colours applied to TR6 models during production (see sample above).
Midnight Blue (16)	Signal Red: is the colour name.
Shadow Blue (16)	• indicates that the colour also applied to TR5/250.
New Tan (33)	(32) The figure in brackets is the original Triumph paint code.
Beige (44)	1969-71 The dates refer to model years during which the paint was used.
Chestnut (63)	CCRD32 is the Moss paint code.
Grey (78)	Thus Signal Red (paint code 32) was available for the 1969 to 1971 model year cars. It was also applied to TR5/250 models and is available from Moss as an aerosol (part no. CCRD32A) or as a touch in can (part no. CCRD32B).
	1969 1970 • 1969 1971 1971 1971

Immediately left of the paint swatch are the trim colour options available for that particular paint colour. (The names of each trim colour are shown left).

The dates shown in the swatch apply to the model years during which the trim colour was available.

Thus signal red cars were available with light tan (1969), new tan (1970-71) and black (1967-71).

Paint And Trim Codes



The commission plate on the scuttle provides information about the vehicle colour, trim material and trim colour.

The two or three digit codes are based on groups formed around a basic colour.

Black 01	Yellow 04	Purple 07
Red 02	Green 05	Grey 08
Brown 03	Blue 06	White 09

For example "signal red" has a code of 32, pimento 72 and carmine 82 (the eighth colour in the range). Trim colours use the same codes - matador red has a code of 12, while light tan trim from the brown range is 13 sienna 23.

The trim material can also be identified. A prefix letter 'H' in the trim box of the commission plate identifies leather trim, prefix 'C' indicates cloth. The absence of a prefix indicates leather cloth.

Additional Notes

1. Conifer green was often referred to as Triumph racing green.
2. New tan replaced light tan early on in the 1970 model year - so some early 1970 cars may well light tan trim.
3. Colours marked • were applied to the TR5/250 models.
4. Carpet colours matched the trim except in the case of chesnut beige trim when the new tan carpet was supplied.

Finishing Touches

- Rear Panel. The rear panel of the TR6 was painted in satin black (part no. CCSB2).
- Wheels. The wheels (both wire and pressed steel types) can be painted using silver wheel paint (part no. CCWP1). Wire wheels were originally lacquered, but by using the CCWP1 and a few coats of clear lacquer a similar effect can be achieved.
- High Build Primer. Following minor bodywork repairs start off by using high build primer (part no. CCP1) prior to using primer and gloss coats.

1972	• 1969	1969	1970	1973	1976	• 1969
1975	1971		1972	1976	1976	1976

	• 1969	• 1969	Black • (11)
	1976	1976	1967-76 CCSB1 A/B
1969	1970	• 1969	Signal Red • (32)
	1971	1971	1967-71 CCRD32 A/B
	1973	1972	Pimento (72)
	1976	1976	1972-76 CCRD72 A/B
1972	1973	1973	Carmine (82)
	1974	1975	1973-76 CCRD209 A/B
1969	1970	1969	Damson (17)
	1972	1972	1969-72 CCRD17 A/B
	1970	1970-71	Sienna (23)
	1973	& 1973	1971-73 CCBG23 A/B
1974	1976	1974	Maple (83)
		1975	1974-75 CCBG73 A/B
		1976	Russet Brown (93)
			1976 CCBG93 A/B
1969	1970	• 1969	Jasmine • (34)
		1970	1967-72 CCYL34 A/B
	1971	1971	Saffron (54)
		1972	1971-72 CCYL54 A/B
1973	1976	1973	Mimosa (64)
1976		1976	1973-75 CCYL64 A/B
	1976	1976	Topaz (84)
			1975-76 CCYL84 A/B
		1976	Inca (94)
			1976 CCYL207 A/B
1969	• 1969	• 1969	Confiner Green • (25)
			1967-70 CCGN25 A/B
1970	1970	1970	Laurel (55)
	1971	1972	1969-71 CCGN55 A/B
		1973	Emerald (65)
		1974	1972-73 CCGN65 A/B
	1976	1976	1975 British Racing Grn (75)
			1975-76 CCGN75 A/B
		1976	Java (85)
			1975-76 CCGN85 A/B
	• 1969	• 1969	Royal Blue • (56)
	1971	1971	1967-71 CCBU56 A/B
1972	1971	1971	Sapphire (96)
	1974	1974	1971-74 CCBU96 A/B
	1973	1973	Mallard (106)
	1974	1974	1973-74 CCBU106 A/B
		1973	French Blue (126)
		1976	1973-75 CCBU126 A/B
	1976	1976	Delft (136)
			1975-76 CCBU136 A/B
	1976	1976	Tahiti Blue (146)
			1976 CCBU65 A/B
	•	•	Wedgewood Blue • (26)
			1967 CCBU26 A/B
	•	•	Valencia Blue • (66)
			1967 CCBU66 A/B
		1973	Magenta (92)
		1974	1973-74 CCRD92 A/B
	1972	• 1969	White • (19)
	1975	1971	1967-76 CCWT19 A/B