

Triumph

ACCESSORIES

1953-1981

Kenlowe fan kit *Camshafts*
K&N air filters *Nitrous Oxide*
Hoods & tonneau
Wire wheels *Cross drilled brake discs*
Weber carburettors *Moto-Lita steering wheels*
Performance exhausts *Spax shock absorbers*



Dear Enthusiast

Welcome to the new Moss Triumph accessory catalogue for 2006/2007. It contains parts to personalise your Triumph as much as your heart or wallet desires from a tax disc holder to nitrous oxide.



This comprehensive parts and accessory catalogue contains an extensive selection of quality aftermarket and performance enhancing products. Used in conjunction with our new 2006/2007 model specific Triumph restoration and hard parts catalogues these publications contain a

full range of parts to enable you to continue getting the maximum use and enjoyment from your Triumph. Whether you are building your ultimate Triumph from a new chassis (you can join our Rebuild Programmes - to help save you money, see page 66), modifying your current Triumph or just trying to keep your daily drive running on a limited budget, Moss has the right parts for you.

Moss stock parts for all Triumph models from the earliest TR2 to the last of the TR7s including all the interim models. Our full time research and development team are constantly striving to ensure our parts are of the highest quality and offer good value for money. When parts are discontinued by the manufacturer we endeavour to resource them to a standard at least equal to the original, if not improved. New products are constantly sought, so we can continue to bring you the best parts and accessories for your Triumph.

We hope you enjoy this catalogue and remember you can call, come in or visit www.moss-europe.co.uk

The Moss sales team.



Contact Details (For full contact details turn to page IBC)

Moss website.

www.moss-europe.co.uk

Moss London sales.

Tel 020 8867 2020 fax 020 8867 2030 e-mail sales@moss-europe.co.uk

Moss Bradford sales.

Tel 01274 735 537 fax 01274 735 595 e-mail bradford@moss-europe.co.uk

Moss Bristol sales.

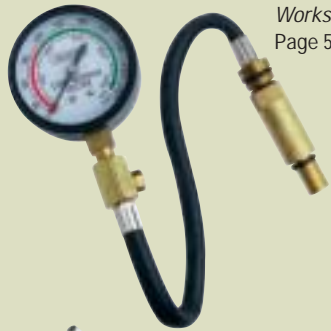
Tel 0117 923 2532 fax 0117 942 8236 e-mail bristol@moss-europe.co.uk

Moss Manchester sales.

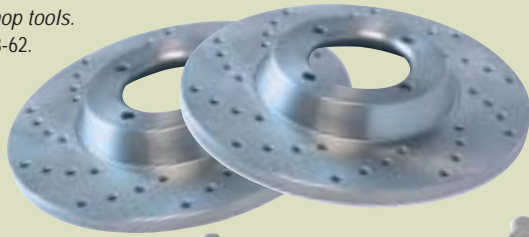
Tel 0161 480 6402 fax 0161 429 0349 e-mail manchester@moss-europe.co.uk



© Copyright Moss Europe Ltd. July 2006. Printed in the U.K. All rights reserved. No part of this publication may be reproduced, stored in a retrieval system, or transmitted in any form by any means, electronic, photocopying, recording or otherwise without prior written consent of Moss Europe Ltd. **IMPORTANT NOTICE.** Moss make every attempt to keep prices competitive and stable, however in common with all other suppliers in our industry, we reserve the right to alter these prices without prior notice. E&OE. Please note: Products are not shown to scale or in proportion and colours may vary slightly to samples featured in this catalogue, due to the limitations of colour printing.



Workshop tools.
Page 58-62.



Brake discs.
Page 24-25.



Starter motors.
Page 36.



Distributors.
Page 34-35.



Wire wheels.
Page 16-17.



Fuel pumps.
Page 42-43.



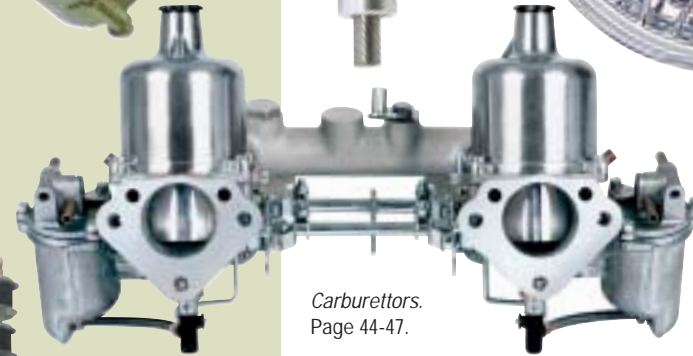
Auxiliary gauges.
Page 10.



Exhausts.
Page 30-33.



K&N air filters.
Page 48-49.



Carburettors.
Page 44-47.



Mirrors.
Page 12-13.

Shock absorbers.
Page 26-29.



Oil coolers.
Page 38-39.



Moto-Lita steering wheels.
Page 06-07.



Gearknobs.
Page 06.



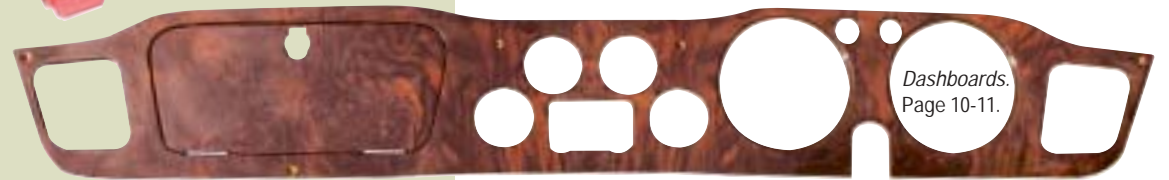
Period spot lamps.
Page 18-19.



Pistons.
Page 52-53.



Straps.
Page 12-13.



Dashboards.
Page 10-11.

U.K. ordering

We accept orders by mail, telephone, e-mail or fax. If you have the opportunity, we invite you to visit one of our branches. Remember, supplying details of your car, (i.e. engine, commission or Vehicle Identification Number (VIN) LHD or RHD, year of manufacture and any modifications) saves time and helps us to help you. Please inform us of your Customer Number, as this will speed up the processing of your order.

Overseas ordering

As with the U.K. we accept orders by mail, telephone, e-mail or fax. If you visit the U.K. we would be delighted if you visited one of our branches. When ordering, please ensure that you enclose full details of your name, address and Customer Number, plus details of your car (i.e. engine, commission or Vehicle Identification Number (VIN) LHD or RHD, year of manufacture and any modifications).

Please Note: Overseas orders are often subject to local import duties, taxes and Customs clearance, which will need to be paid for at the point of entry. These charges are NOT included in the price of the goods or delivery prices. All relevant Customs forms and documentation needed to ensure the order arrives with the minimum of delay, will be included with your shipment. If you have any special requirements, please contact us to discuss them.

Remember delivery charges are dependent upon the size and weight of the shipment. If a quotation is required prior to placing an order, please contact the export department at your chosen branch and they will be pleased to supply a full quotation.

Parts back-order system

A back-order system is used when a part is not in stock at the time of ordering. If the item is expected to become available within a reasonable time frame, then it will be put on back-order, unless the customer instructs us otherwise. When we have the parts in stock, the back-order will be processed automatically and the item will be dispatched to the customer. If the particular part becomes No Longer Available (NLA) or is likely to be unavailable for some time, then the customer will be advised and asked if the order is to be cancelled.

Shipping and dispatch methods

Orders for delivery in the UK may be dispatched by regular post (for small/lightweight items), or through a Next Day courier, or alternatively a 2-3 day courier service. Please speak to our sales staff to choose the best delivery option for your parts order. We are constantly striving to improve the service we offer, so please contact your local branch for the latest shipping prices. For delivery outside the UK we offer the following services.

Parcels up to 30kg.	Europe 1 to 3 days.
	Europe by road 2 to 5 days.
	Worldwide 1 to 3 days
Shipments up to 500kg.	Europe by road 2 to 5 days
	Worldwide by air 2 to 7 days to destination airport for collection or delivered direct to customers address.
	(Sea freight regarded as too slow for most retail orders)

For these services, please ask for prices when you place your order. All shipments are now 'trackable' (inc. Internet access for selected carriers). Please speak to one of our sales staff to choose your best parts delivery option. Please remember, all carriage charges are dependent on weight band, volume, destination and delivery time. If a

quotation is required prior to placing your order, please contact a member of the sales department at your chosen Moss branch who will be happy to discuss your requirements. If you prefer, you may arrange your own shipping and dispatch.

Quotations and payment methods

We will be pleased to provide a full parts quotation detailing price, availability and relevant shipping costs. Payment may be made by cash, personal cheque (to the card guarantee limit), Certified Bank Draft, Sterling Travellers Cheques and credit or debit card, including: Mastercard, Visa, Switch, Delta. If you intend to make payment by Cheque or Bankers Draft when using our fast mail-order parts service, please confirm parts availability and carriage charges.

Value added tax

Value Added Tax (VAT) at the current rate will be levied on all orders being dispatched to all countries within the European Community. VAT is not charged on goods dispatched to countries outside of the EC. However, such orders are often subject to local import duty, taxes and Customs clearance, which MUST be paid by you at the port of entry. Such charges are not included in the cost of the goods or delivery prices.

Exchange units

We are able to offer a full rebuild service on numerous major components in our product range. We offer this service as an alternative to direct replacement parts, or when a brand new item is no longer available. However, the continuity of this exchange scheme needs the understanding and co-operation of our customers in relation to several important points.

It is important to remember that "rebuild" does not mean "brand new". Rebuilding a unit involves stripping, cleaning, inspecting and re-assembling the unit. During this process, parts showing signs of wear will either be completely replaced or suitably renovated. However, it is not always feasible for major sub-components to be replaced with brand new ones, for example, an exchange engine will not have a new block. Due to the nature of certain product lines, some items can only be offered on a "one for one" exchange basis. This effectively means that you must offer us a viable unit before we can release a fully rebuilt item from our stock. In some instances we can only carry out reconditioning of your own unit. Our staff will inform you if this is the case. All exchange units are subject to a surcharge. This surcharge serves two purposes: firstly, it acts as an incentive for you to return your old unit, and secondly it provides us with financial cover if your returned unit proves unsuitable for exchange purposes.

Whether or not your returned unit is suitable for exchange purposes cannot be ascertained until it is made available to us for inspection. As a general rule, suitable for exchange basically excludes any items that are beyond reasonable repair (e.g. crankcases ventilated with a connecting rod) or units irrevocably damaged. We are also unable to accept units unless they are returned in whole, complete form (i.e. differential units which are returned partly stripped with no bearings and all the shims missing are not generally accepted), nor do we accept a "box of bits".

Surcharges will only be refunded once our core department has passed the item as serviceable. Under no circumstances can any exchange unit be shipped overseas until we receive your original unit. We have predetermined prices for our exchange units based on our experience, of repair costs for a gearbox, axle or engine. Occasionally, however, the damage to the unit is so great that we will contact you before beginning work on your unit to advise you of any additional cost that may be incurred during the rebuild of the unit. We can return the unit (at your cost) if this proves unacceptable.

Core returns

Exchange items are subject to a surcharge that is refunded when a rebuildable unit (core) is returned. Cores must be returned within 90 days of purchase. When you receive the rebuilt unit, attached to it will be a Core Return Authorisation Tag. This tag must be removed from the rebuilt unit and attached to the returned core in order to receive credit. Cores must be returned in the original box or carton supplied with the rebuilt unit. Cores must be shipped clean and empty of fluids. Cores must be complete, assembled and rebuildable to receive credit or refund. You must pay all shipping charges for the return of the core and these charges are not refundable.

Warranty

All parts are warranted against defects in materials and workmanship for a period of 12 months from the date of purchase. The warranty does not cover labour charges, failure of a related component, failure resulting from incorrect installation or misuse, nor will the warranty in any event be greater than the cost of the original component.

Warranty returns

Parts that fail in use may be returned for 12 months from the date of purchase. Returns must be accompanied by the original invoice - no warranty claims will be paid without a copy of the original invoice. Return freight will be reimbursed. Electrical parts returned for warranty will be tested and if found functional, no return credit will be given and the part will be returned. Reimbursement is made by the original payment method. Complete the return form included in each order, pack the items securely and use the shipping return label supplied.

Non-warranty returns

All uninstalled parts, in their original packaging may be returned within 90 days for any reason. A copy of the original invoice or the picking label (which is generally attached to the original packaging) must accompany the return. Return freight is paid by the customer. If the return is due to our error, the return freight will be reimbursed. Parts returned outside of this policy or in non-resalable condition may not be accepted or may be assessed a 15% handling fee. Reimbursement is made by the original payment method. Complete the return form included in each order, pack the items securely and use the shipping return label supplied.

Customer service

We value your custom and wish to ensure that you receive the very best service. Every effort will be made to provide you with Quality Parts and Expertise in a relaxed, helpful and friendly manner. Should you consider the service you receive from us to be unsatisfactory, or you have any problems with the part(s) purchased, please advise a member of the sales team at the originating branch. If the matter is not resolved to your satisfaction, please contact our Customer Services Department at.

Customer Services, Moss Europe Ltd. Hampton Farm Industrial Estate, Hanworth, Middlesex TW13 6DB England.

We will do our best to resolve the issue and keep you as a loyal and happy Moss customer.

British Motor Heritage

Moss Europe Ltd. is a British Motor Heritage approved specialist. Our agreement with British Motor Heritage allows us the use of marque logos and some of the artwork contained within this catalogue.



Whatever, wherever, whenever... 24 hours a day

- Restoration parts.
- Accessory products.
- Performance parts.
- Service parts.
- Downloadable catalogues.
- New product information.
- Special offers.
- Secure on-line ordering.
- Shopping basket service.
- Order confirmation page.
- 24 hour worldwide service.
- Optional password protection.



Wherever you are in the world, your parts are just a click away!

www.moss-europe.co.uk



Ordering	4	Kenlow fans	38-39
Interior	6	Lever-arm dampers	28
Exterior	12	Lightweight flywheels	40
Performance	24	Limited slip differentials	41
Workshop	54	Lock sets	13
Car care	63	Millers oils	54-55
Personal	66	Mirrors	12-13
Contact	67	Mudflaps	14-15
		Nitrous oxide kit	49
Air intake	15	Oil cooler kits	38-39
Alloy rocker covers	50	Oil cooler radiators	39
Alloy sumps	40	Oil filters	39
Alloy wheels	17	Oil pressure switch	39
Alternators	37	Oil thermostats and adaptors	39
Anti roll bars and kits	28	Pedal cover sets	8
Auxiliary gauges	10	Penrite oils	54-55
Bar and grille badges	14	Personal accessories	66
Battery and cut off switches	36	Phantom grip LSD	41
Body panels	24	Pressed number plates	15
Bonnet locks, straps and pins	12	Radiators	38
Books, manuals and CD Roms	64-65	Rebuild programme	66
Boot racks	12	Remote door release	11
Bosses	6	Rocker feed kit	40
Braided fuel pipes	49	Rocker shafts	52-53
Brake discs and drums	24-25	Seat belt kits	8-9
Brake pads	24-25	Shock absorbers	26-27
Camshafts	52-53	Socket and spanner sets	62
Car care products	63	Spark plugs	34
Car covers	22	Starter motors	36
Carburettor kits and parts	44-47	Steering racks	30
Classic seats	8-9	Steering wheels	6-7
Clutches	40-41	Sunvisors	23
Coil and leaf springs	28	Supercharger (TR6) preview	67
Cylinder heads	50-51	Suspension bushes	26
Decals	14	Tax disc holders	11
Distributors	35	Tuning advice	29
Door locking kit	11	Value caps	14
Door threshold plates	8	Water pumps	38-39
Exhaust manifolds	30-31	Wheel nuts	14-15
Exhaust systems	32-33	Wheel spacers	14-15
Footwell mats	8	Wheel trims	14
Fuel tanks and pumps	42-43	Windstops	23
Garage signs	65	Wind wings	23
Gear knobs	6	Wood veneer dashboards	10-11
Gear sets	41	Workshop essentials	58-59
General fluids and coolants	56-57	Workshop testing equipment	60-61
Headlamps kits and relays	18-19		
Hoods and tonneau	20-21		
Horns	15		
Ignition kits	34		
Insulation wrap	57		
K&N filters	48-49		



MOMO gear lever knobs

For over 30 years MOMO has been developing and producing automotive products to the very highest quality. So renowned for their quality that many manufacturers fit MOMO as an optional upgrade. Whichever gear lever knob you choose, it is sure to compliment your interior. Universal fitment.

- 1 Competition gear knobMOMO1053£39.95
- 2 Aluminium sport gear knobMOMO1054£39.95
- 3 Race Air leather gear knobMOMO1057£44.96
- 4 Race Air leather alloy gear knobMOMO1060£49.95
- 5 Sphere aluminium gear knobMOMO1065£52.95
- 6 Anatomic hide gear knobMOMO1050£39.95

Wood and leather gear knobs

Choose from polished varnished wood, or comfortable leather both are available bearing TR emblems. Available with either a nylon self threading insert or with a fine machined alloy insert providing a more stable fitting.



- 7 TR2-3A wooden gear knob (alloy insert)GAC6040X£14.95
- 8 TR2-3A leather gear knob (alloy insert)GAC6041X£15.94
- 9 TR4-7 and Spitfire wooden gear knob (alloy insert) .GAC6042X£14.95
- 10 TR4-7 and Spitfire leather gear knob (alloy insert) .GAC6043X£15.94
- 11 Triumph wooden gear knob (nylon insert)GAC6050X£5.95
- 12 Triumph leather gear knob (nylon insert)GAC6051X£4.95

Moto-Lita steering wheels

Moto-Lita are among the finest replacement steering wheels available. Designed to enhance the appearance of the cockpit and provide an improved feel for the driver.

the finest replacement steering wheels...

Available in a variety of styles, materials and sizes to suit, please see our website for the full list of options. All steering wheels listed feature spokes with holes, except where detailed.

Wood rimmed steering wheels.

- Mk3 flat polished spokes 13"MLW1115-13£107.95
- 13 Mk3 flat polished spokes 14"MLW1115-14£107.95
- Mk3 flat polished spokes 15"MLW1115-15£107.95
- 14 Mk3 dished polished spokes 13"MLW1116-13£107.95
- Mk3 dished polished spokes 14"MLW1116-14£107.95
- Mk3 dished polished spokes 15"MLW1116-15£107.95
- 15 Mk3 flat polished spokes with thin slot 15"MLW1120-15£107.95
- Mk3 flat polished spokes with wide slot 15"MLW1122-15£107.95

Mahogany rimmed steering wheels.

- 16 Mk9 flat polished spokes 14"MLW1119-14H£153.95
- Mk9 flat polished spokes 15"MLW1119-15H£153.95



Leather trimmed steering wheels.

- Mk4 flat polished spokes 15"MLW1111-15£107.95
- Mk4 flat black spokes 13"MLW1112-13£107.95
- 17 Mk4 flat black spokes 14"MLW1112-14£107.95
- Mk4 flat black spokes 15"MLW1112-15£107.95
- 18 Mk4 dished polished spokes 13"MLW1113-13£107.95
- Mk4 dished polished spokes 14"MLW1113-14£107.95
- Mk4 dished polished spokes 15"MLW1113-15£107.95
- Mk4 dished black spokes 13"MLW1114-13£99.25
- Mk4 dished black spokes 14"MLW1114-14£107.95
- Mk4 dished black spokes 15"MLW1114-15£107.95

Moto-Lita bosses

Use the appropriate boss to fit your Moto-Lita steering wheel, supplied with plastic centre cap with or without horn push as required.

- TR2-3 fixed column (non original horn push) ...MLW1117B1H£39.95
- TR2-3 fixed column (original horn push)MLW1117B22£74.95
- TR2-3 adjustable columnMLW1117B24£72.95
- TR4-6MLW1117B20£39.95
- Spitfire 1500MLW1117B45£39.95
- TR7-8MLW1117B59£39.95

Moto-Lita accessories

Replacement wheel centres in plastic or if preferred polished aluminium and replacement ring kits with screws to mount the wheel to the boss.

- Billet centre cap 3.5"MLW1117BCC£29.95
- 19 Billet horn push 3.5"MLW1117BHP£54.95
- 20 Moto-Lita centre capMLW1117X1£6.20
- 21 Centre cap and horn pushMLW1117X2£11.95
- Polished ring kitMLW1117X3£7.95
- Black ring kitMLW1117X3B£7.05



Mountney steering wheels

Mountney steering wheels are known for offering good quality and feel at a reasonable price, available with either wood or leather rims.

Wood rimmed steering wheels.

- Flat polished spokes 13"GAC9111X£54.95
- 22 Dished polished spokes 13"MDW007£65.35



13



14



15



16



17



18



22



23



24

Leather trimmed steering wheels.

23 Flat black spokes 12"MSW009£43.94
24 Flat polished spokes 13"MSW008£43.94
Flat black spokes 13"MSW008B£32.79
Flat polished spokes 14"GAC9101X£41.95
Flat black spokes 14"GAC9101XB£41.95

Mountney bosses

Use the appropriate boss to fit your Mountney steering wheel.

TR4-6GAC9122B£18.49
Spitfire (to 1977)MSB005£18.49
Spitfire (1977 on) and TR7GAC9121X£18.49



Overmats

Choose from a selection of overmats to protect your carpets, either moulded rubber or a pair of our hard wearing carpet mats.

Rubber overmats

These high quality injection moulded rubber mats each feature a specific Triumph logo. Keep carpet wear to a minimum and easily cleaned with a bit of soap and water.

- 1 TR7 rubber mats (pair)AM6818-2£17.25
- 2 TR2-6 rubber mats (pair)AM6819-2£17.25
- 3 Spitfire rubber mats (pair)AM6820-2£17.25

Nylon carpet overmats

These nylon carpet footwell overmats feature the Triumph laurel. They are mud and water resistant and include an anti-slip backing. They are supplied as a pair, with rubber heel mats sewn on to both to allow fitment to RHD and LHD models.

- 4 TR4-6 nylon carpet overmats (pair)MAT3£22.95
- Spitfire nylon carpet overmats (pair)MAT4£22.95

Embroidered carpet overmats

Deep, tufted dense cut pile carpet with non-slip and rolled edge binding. Features an embroidered TR logo. Heavy twisted polyamide yarn is crush resistant. Specially treated to minimise stains and easy to clean.

- 5 TR2-6 carpet overmat set240-440£47.95

Ultra plush embroidered carpet overmats

Custom tailored for a perfect fit for TR2-6 models, these mats are made with an ultra-dense plush carpet and non-slip rubber backing. They come embroidered with a colourful 3 1/2" TR logo.

- 6 TR2-6 ultra plush overmat set240-740£108.95

Door threshold plates

Protect your paint from scuffs and scratches. Our highly polished stainless steel door step threshold plates, can be fitted by screws, rivets, glue, or double sided tape. Our brushed aluminium treadplates can only be screw fixed to the car. Fittings not included.

- TR2-3A aluminium* (RH) (each)900429£11.95
- TR2-3A aluminium* (LH) (each)900428£11.95
- TR2-3A stainless with Triumph text* (RH) (each) ..900429SS£12.26
- TR2-3A stainless with Triumph text* (LH) (each) ..900428SS£12.26

- TR2-3A aluminium (pair)GAC6065X£14.25
- 7 TR4-6 aluminium (pair)GAC6066X£16.76
- 8 TR6 stainless steel with TR6 logo (each)TT7246£13.28
- 9 TR4-6 stainless steel with laurel (each)TT7346£13.28
- Threshold plate fitting screw (as reqd.)575937£0.39
- (*Threshold plates can only be screw fixed to the car)

Alloy pedal cover set

Give the interior a racing car feel. This universal diecast aluminium pedal set is easy to fit and looks great. They also assist your heel and toe shifting.

- 10 Pedal cover setMT5110£35.94

Classic leather seats



Our handcrafted leather faced classic seats have been designed to provide the ultimate in driver comfort with styling to compliment the interior of your TR. The seats have adjustable backs to give much improved support for the lower back and upper leg and better lateral support than the original seats, making your TR a more comfortable place to be.

These seats are available in black leather with black piping or alternatively with contrasting white piping. Supplied in pairs they include new runners and leather head restraints for safety.

- 11 Classic leather seats* (pair) - black/blackSAA9001A£649.95
- 12 Classic leather seats* (pair) - black/whiteSAA9001W£649.95
- (*Suitable for TR4-4A, TR5 with surrey top, TR6 with hard top)
- Classic leather seats (pair) - black/blackSAA6021A£759.95
- (Suitable for TR5-6 with soft top)

Seat belt kits

All our seat belts are manufactured in the U.K. to exacting standards. The adjustable reel belts attach to the original 3 mounting points but feature angle-adjustable reel, eliminating pivot/guide on top of wheel arch, offering a solution to problems encountered where mounting points may be unsuitable because of non-standard seats or a rollover bar. The fixed reel seat belts must have the reel mounted vertically and include a guide to be mounted nearer to shoulder level. Belts come with fittings and are sold individually.

Static seat belts.

- Static seat belt 30cm stalk - blackSBS300/30£23.95
- Static seat belt 45cm stalk - blackSBS300/45£27.95
- Static seat belt 30cm stalk - redSBS300/30RED£29.95

Fixed reel inertia seat belts.

- 13 Inertia seat belt 30cm stalk - blackSBS500/30£39.95
- Inertia seat belt 45cm stalk - blackSBS500/45£44.96
- 14 Inertia seat belt 30cm stalk - redSBS500/30RED£49.95





Angle adjustable inertia seat belts.

- Inertia seat belt 15cm stalk - blackSBS514/15£43.94
- 15 Inertia seat belt 30cm stalk - blackSBS514/30£39.95
- Inertia seat belt 45cm stalk - blackSBS514/45£40.24
- Inertia seat belt 30cm stalk - blackSBS514/30AUS£44.96
(Australian specification)
- Inertia seat belt 30cm stalk - redSBS514/30RED£49.95

Vintage competition lap belt

The ultimate sporting accessory, ideal for early TR's, it features a quick release buckle for a fast get away. Includes fittings. This belt is not type approved therefore should only be used in cars that pre-date seat belt regulations.

- 16 Vintage competition lap beltMM222-211£77.95



Harness kits

Our seat harnesses are made to exacting standards. Our high quality Securon 4 point harness kits do not include crotch, shoulder strap pads, or eye bolts (4 bolts per harness), all these items must be ordered separately.

Harness kits.

- 173 point harness kit* - redSBH628RED£32.95
- 3 point harness kit* - blackSBH628BLACK£32.95
- 184 (or 3) point harness kit* - redSBH655RED£43.50
- 4 (or 3) point harness kit* - blackSBH655BLACK£43.50
(*E marked, suitable for road use. For a better quality 3 point harness the 4 point can be fitted by doubling the rear mounting hooks onto 1 eye bolt)

- 4 point harness kit** - redSBH693RED£114.95
- 4 point harness kit** - blackSBH693BLACK£114.95
(**FIA approved, compulsory for international and RAC MSA circuit and stage events. Not approved for road use)

Harness fittings.

- 19 Shoulder strap pads (pair) - redTT7970£19.94
- Eye bolts (pair)TT7967£6.25
- Reinforcing plates (pair)TT7968£5.60
- Bolts and spacers (car set)TT7969£4.41



Auxiliary gauges

We offer a range of new gauges in the classic Smiths style with chrome bezel with black faces and white lettering. Custom build your own dash assembly with these gauges or add them as auxiliary instruments to a wooden dash board. All gauges come with bulb holders and retaining brackets.

- 0-7000 tachometer full face 80mm - blackGAE125X£80.95
- 10-8000 tachometer full face 80mm - magnolia ...GAE130M£99.95

- 2 Clock full face 52mm - blackGAE128X£59.95
- 3 Clock full face 52mm - magnoliaGAE128M£57.95
- Clock full face 52mm black bezel (inc. plinth) - black .GAE128Z£50.95

- 4 Electric water temp. half face* 52mm - black ...GAE124X£31.45
- Electric water temp. half face* 52mm - magnolia .GAE124M£31.45

- Oil temperature half face* 52mm - blackGAE129X£38.95
- 5 Oil temperature half face* 52mm - magnolia ...GAE129M£38.95
- Capillary oil pressure half face* 52mm - black ...GAE123X£47.95
- 6 Capillary oil pressure half face* 52mm - magnolia .GAE123M£47.20

- 7 Capillary water temp + oil press dual* 52mm - black .GAE127X£95.95
(Includes fittings)
- 8 Capillary water temp + oil press dual* 52mm - black .LUSJB100£59.95

- 9 Dynamo ammeter half face 52mm - blackGAE120£31.45
- Alternator ammeter half face 52mm - black ...GAE121£31.45
- 10 Voltmeter half face 52mm - blackGAE122£31.45

Gauge fittings (*may be required).

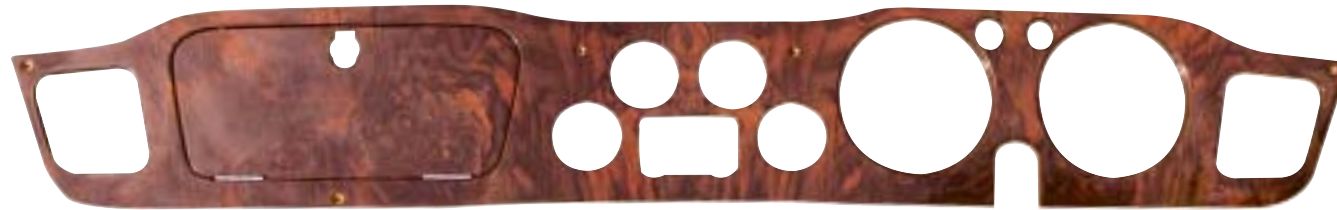
- Nylon pipe for oil pressure gaugeLUSIB703£12.46
- Y piece for oil pressure gaugeLUSIB748£3.60
- Male/male adaptor for oil pressure gaugeCAM6431£3.85
- Leather washer for oil pressure gauge2K4936£0.21
- Male/female adaptor for water temp. gauge ...11K2846£3.80
- Male/male adaptor for water temp. gauge11K2846X£5.95

Wood veneer dashboards

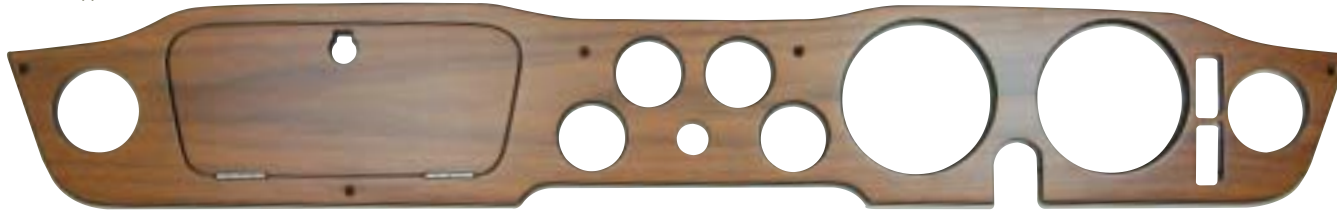
The wooden dashboards used in Triumph sports cars of the sixties and seventies tend to suffer from exposure to the elements which can lead to cracking varnish and lifting veneer. Damaged dash boards can be easily replaced with one of our high quality, real wood veneer panels.



Available with a choice of veneers and finishes: crown veneer is similar to that used by Triumph during production of the TR5-6, alternatively burr walnut is available. Both veneers are available in either matt or gloss finish. For full details of dash fittings please refer to our restoration catalogues.



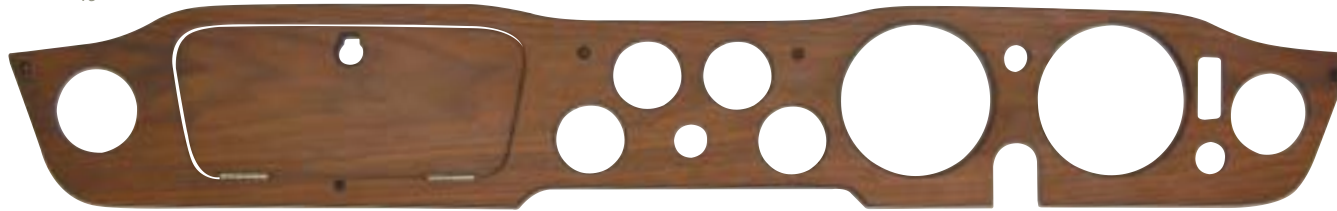
11



12



13



14



TR4 burr gloss RHD903504BG£194.94
TR4 burr gloss LHD903508BG£194.94
17 TR4A burr gloss RHD904154BG£194.94
TR4A burr gloss LHD904153BG£194.94
12 TR5-6 (CP models) crown matt RHD907709£194.94
TR5-6 (CP models) burr gloss RHD907709BG£194.94
TR5-6 (CP models) burr matt RHD907709BM£194.94
TR5-6 (CP models) crown gloss RHD907709CG£194.94
13 TR5-250-6 (to CC67893) crown matt LHD907710£194.94
TR5-250-6 (to CC67893) burr gloss LHD907710BG£194.94
TR5-250-6 (to CC67893) burr matt LHD907710BM£194.94
TR6 (CR1-CR2911) O.E. matt RHD910057£194.94
TR6 (CR1-CR2911) burr gloss RHD910057BG£194.94
TR6 (CR1-CR2911) burr matt RHD910057BM£194.94
TR6 (CR1-CR2911) crown gloss RHD910057CG£194.94
TR6 (CR75001-CC85737) O.E. matt LHD910058£194.94
TR6 (CR75001-CC85737) burr gloss LHD910058BG£194.94
TR6 (CR75001-CC85737) burr matt LHD910058BM£194.94
TR6 (CF1-CF35000) O.E. matt LHD917550£194.94
TR6 (CF1-CF35000) burr gloss LHD917550BG£194.94
TR6 (CF1-CF35000) burr matt LHD917550BM£194.94
14 TR6 (CR5001 on) O.E. matt RHD917647£194.94
TR6 (CR5001 on) burr gloss RHD917647BG£194.94
TR6 (CR5001 on) burr matt RHD917647BM£194.94
TR6 (CF1-CF27000) O.E. matt LHD917648£194.94
TR6 (CF35001 on) O.E. matt LHDWKC2511£185.96

TR7 central door locking kit

This central door locking kit is designed specifically for the TR7 and TR8, the kit includes 2 motors, relay, linkages, wiring and full instructions.

15 TR7-8 door locking kitWPA7002£88.12
---------------------------	--------------	-------------

TR7 remote boot release

This kit enables you to open the boot lid of your TR7 from within the car.

16 Boot lid release kitWPA7004£55.22
-------------------------	--------------	-------------

Tax disc holders

Every car needs one, whether it is a classic triumph tax disc holder or the modern silver alloy holder.

17 Plastic tax disc holder with TR badge - whiteCRLH413£3.95
18 Plastic tax disc holder with TR badge - blackCRLH406£2.80
19 Alloy tax disc holderGAC4150X£10.95